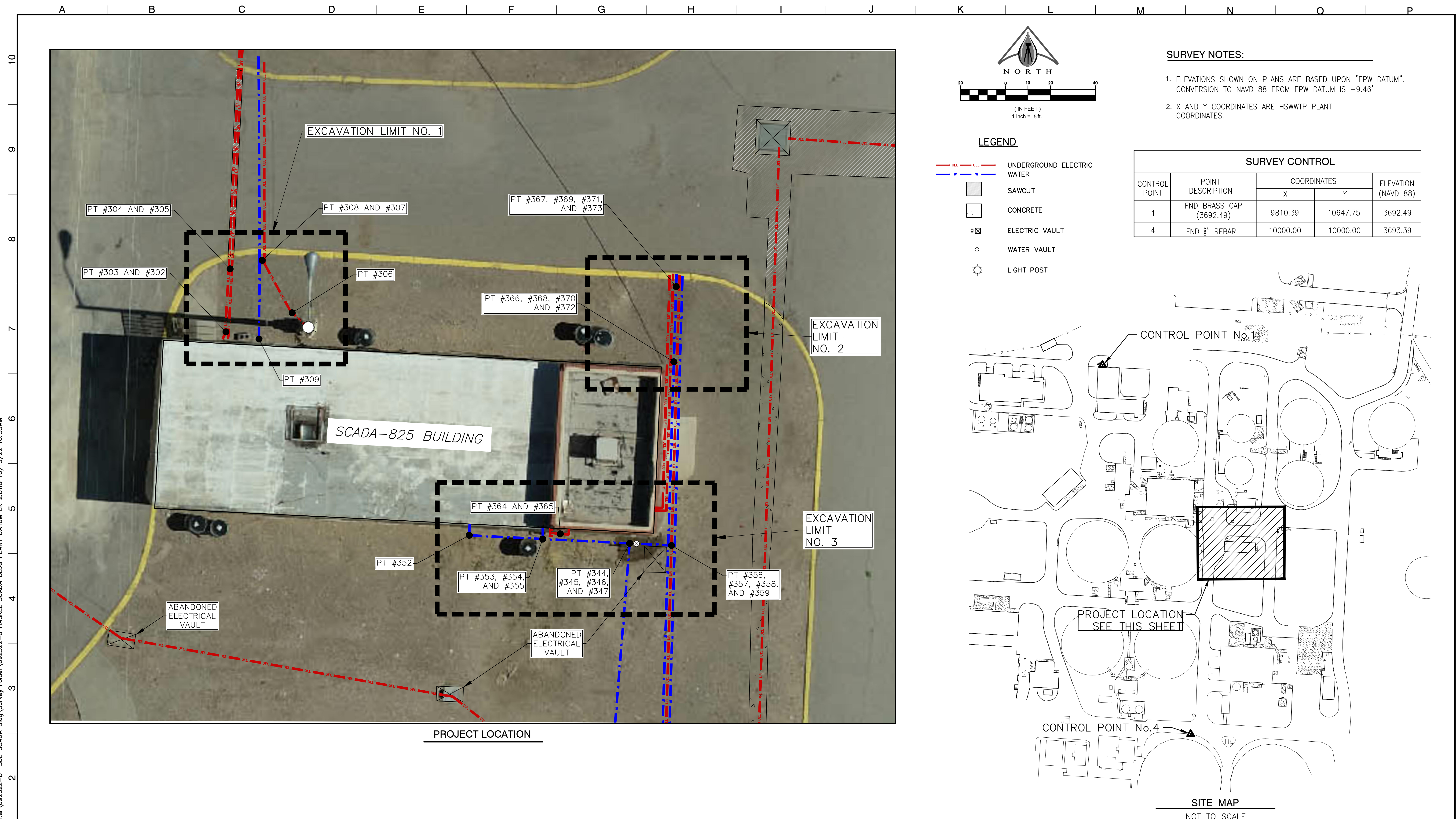


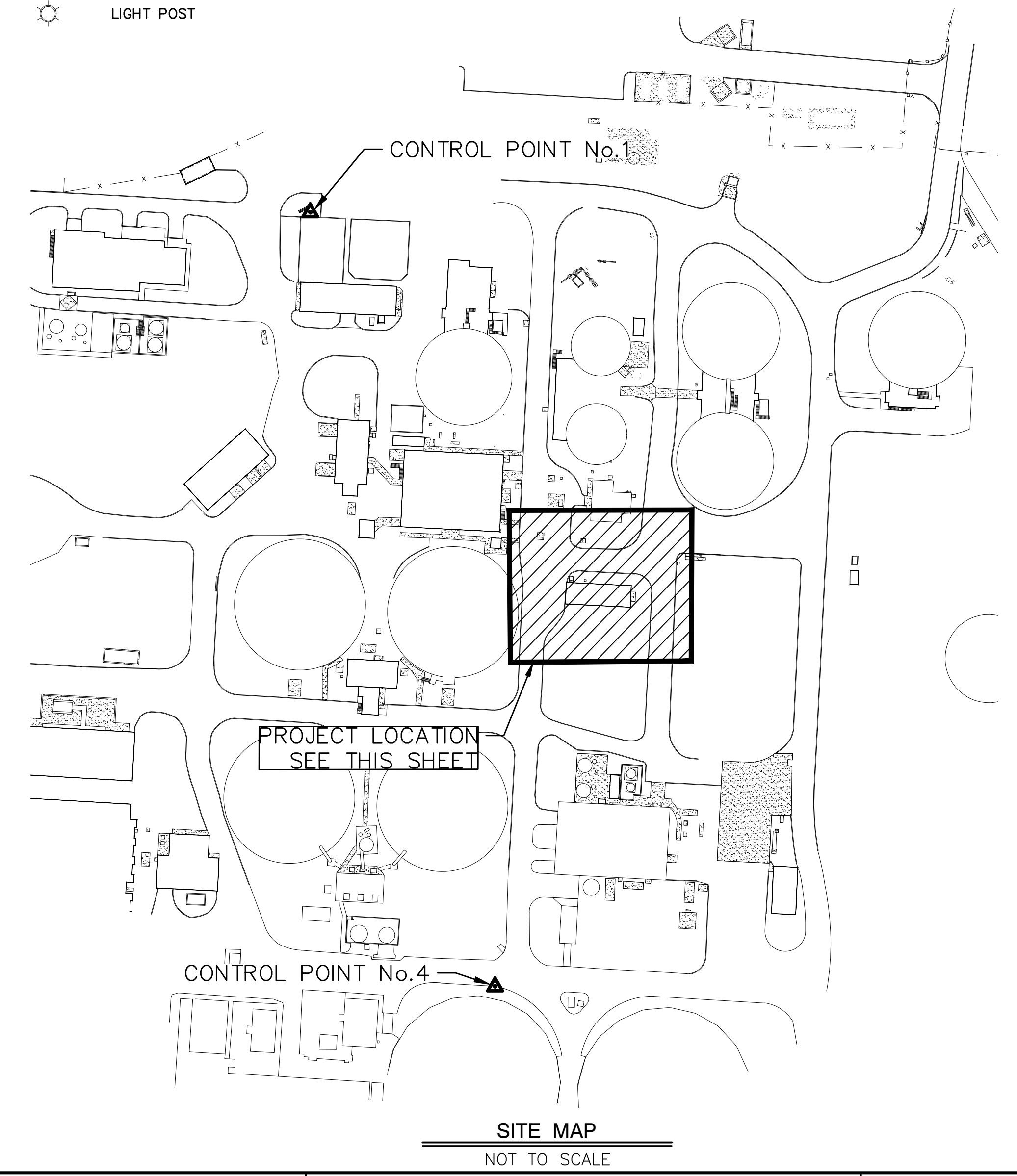
\\SERVER\Clients\EI Paso Water\092322-8 SUE SCADA Bldg\Survey Folder\092322-8 HASKEL SCADA BLDG PLANT DATUM LR 2.DWG 10/13/22 10:33AM



**SURVEY NOTES:**

- ELEVATIONS SHOWN ON PLANS ARE BASED UPON "EPW DATUM". CONVERSION TO NAVD 88 FROM EPW DATUM IS -9.46'
- X AND Y COORDINATES ARE HSWWTP PLANT COORDINATES.

SURVEY CONTROL				
CONTROL POINT	POINT DESCRIPTION	COORDINATES		ELEVATION (NAVD 88)
		X	Y	
1	FND BRASS CAP (3692.49)	9810.39	10647.75	3692.49
4	FND 8" REBAR	10000.00	10000.00	3693.39



**H<sub>2</sub>Terra**  
ENGINEERING. SURVEYING. SOLUTIONS.  
TBPE FIRM NO. F-2103 TBPLS FIRM NO. 10060700  
2020 E. MILLS AVENUE EI Paso, TX 79901  
(915) 533-1418 FAX: (915) 533-4972

THIS DOCUMENT WAS CREATED FOR SURVEYING PURPOSES ONLY

**SCALE**  
LINE IS 2 INCHES AT FULL SCALE  
(IF NOT 2" = SCALE ACCORDINGLY)  
HOR: 1"=5' VER:  
W.O. 092322-8  
DATE: OCTOBER 10, 2022  
DESIGN BY:  
DRAWN BY: LR  
CHKD. BY: STM  
APPD. BY: STM

DATE	REVISIONS	BY



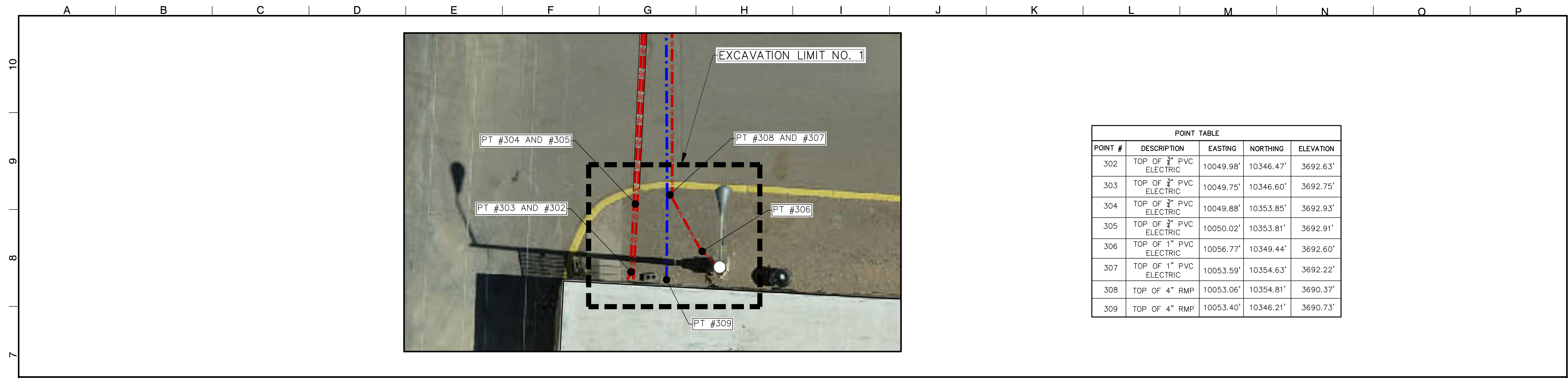
**HASKELL R. STREET W.W.T.P.  
PARTIAL SURVEY**

S.U.E. FOR SCADA BUILDING

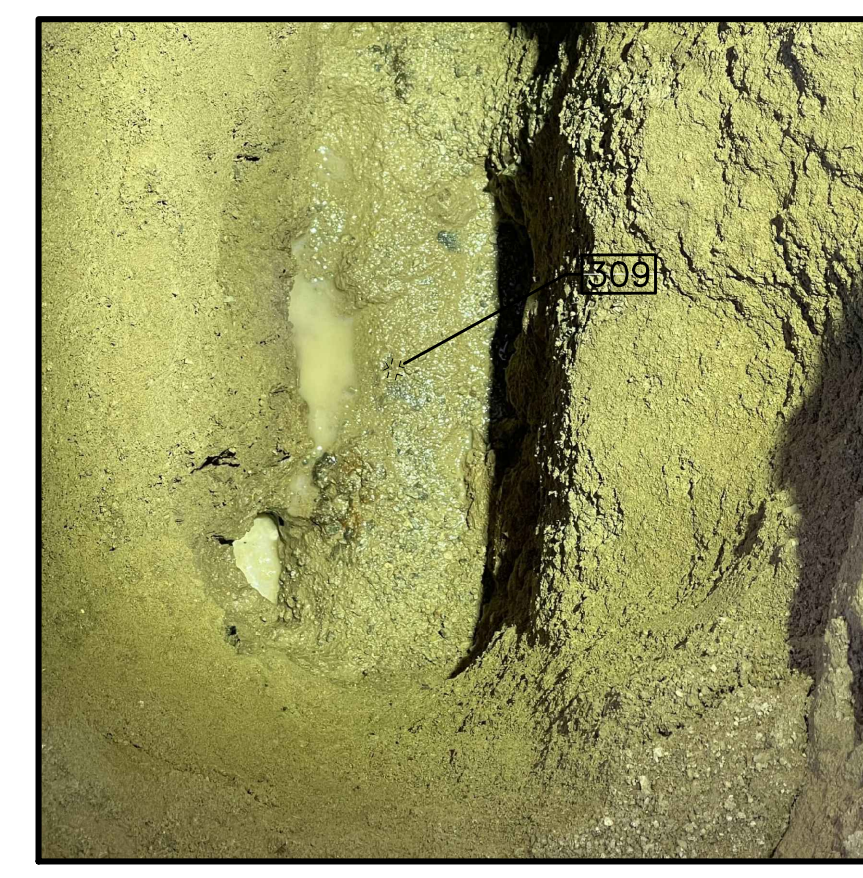
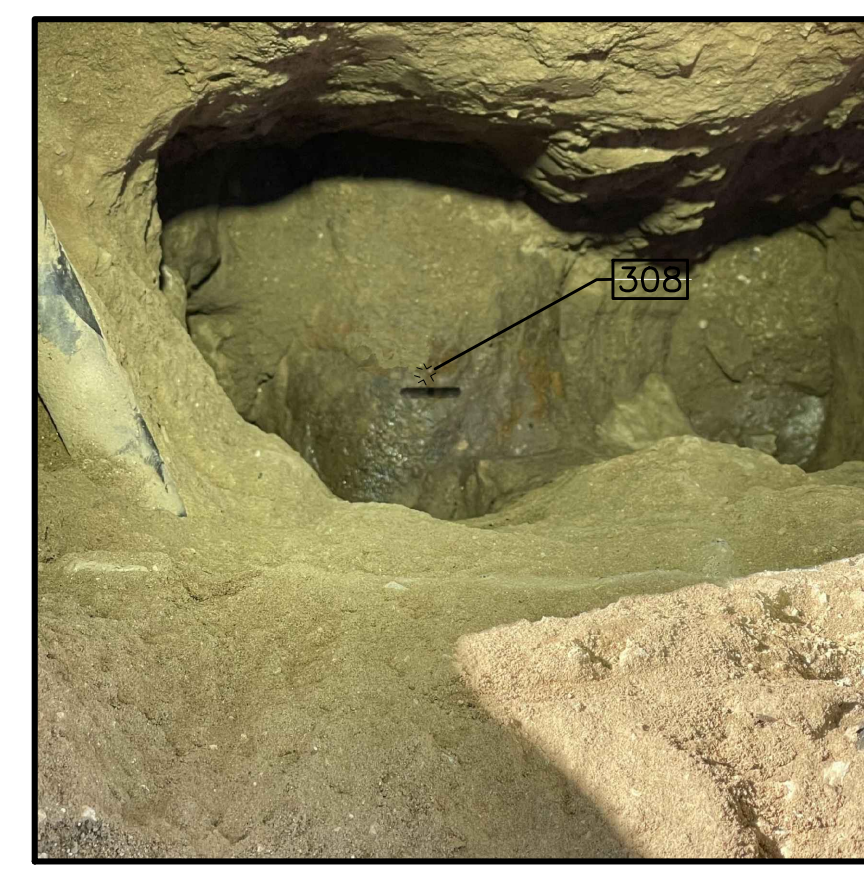
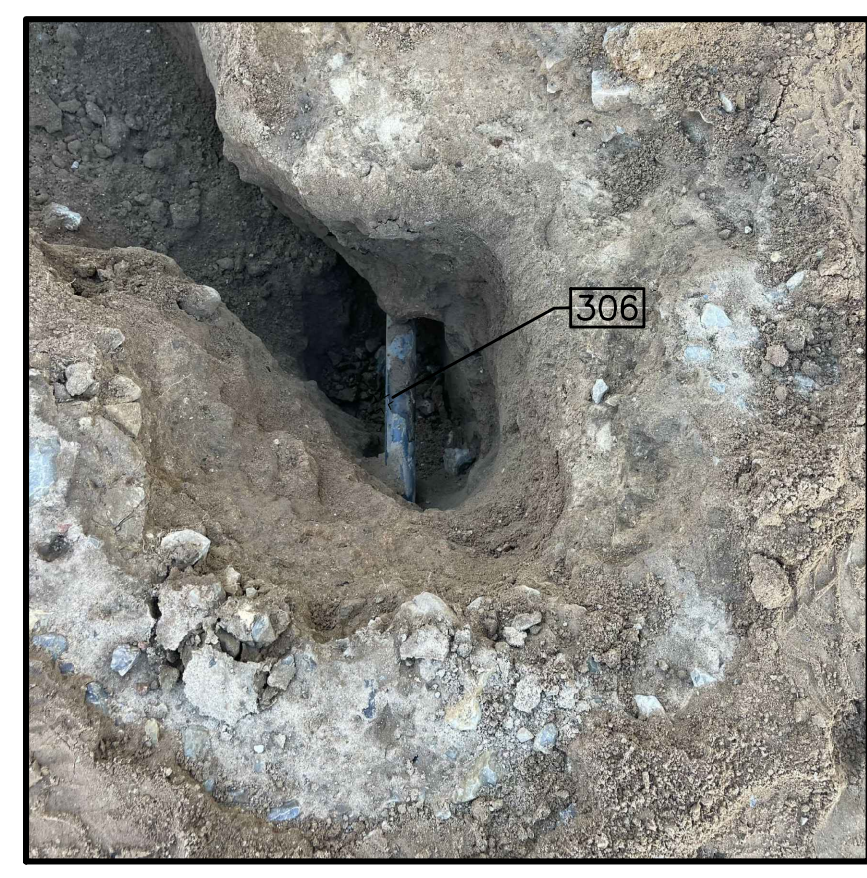
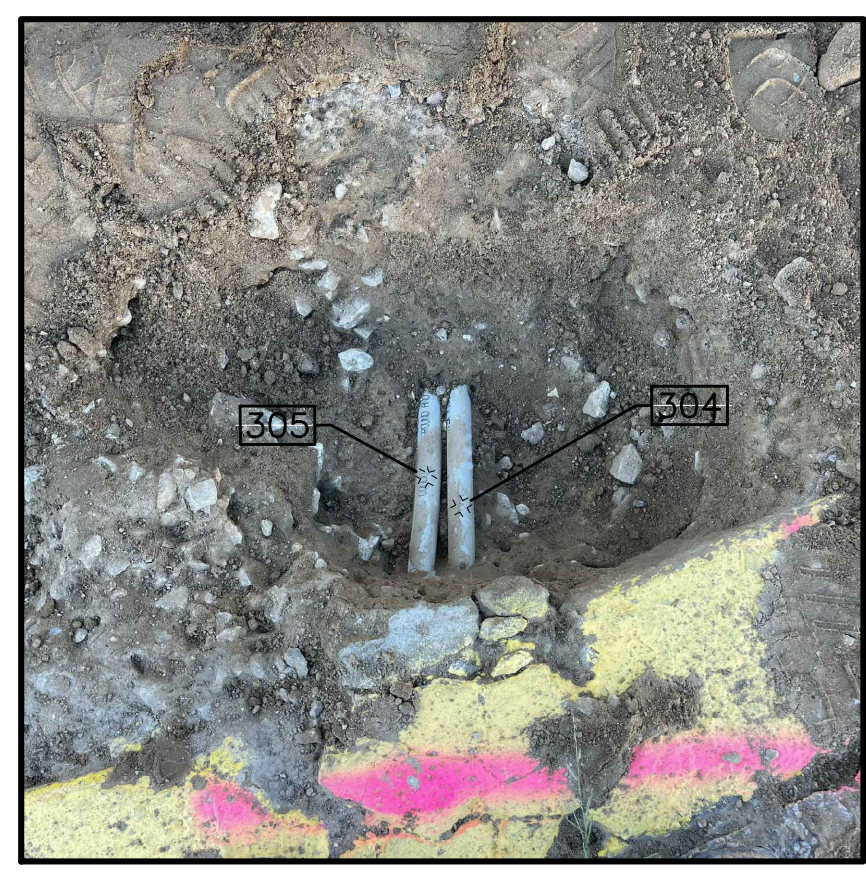
**PD 1**  
SHEET NO. 1



\\SERVER\Clients\EI Paso Water\092322-8 SUE SCADA Bldg\Survey Folder\092322-8 HASKEL SCADA BLDG PLANT DATUM LR 2.DWG 10/13/22 10:34AM



POINT TABLE				
POINT #	DESCRIPTION	EASTING	NORTHING	ELEVATION
302	TOP OF 3" PVC ELECTRIC	10049.98'	10346.47'	3692.63'
303	TOP OF 3" PVC ELECTRIC	10049.75'	10346.60'	3692.75'
304	TOP OF 3" PVC ELECTRIC	10049.88'	10353.85'	3692.93'
305	TOP OF 3" PVC ELECTRIC	10050.02'	10353.81'	3692.91'
306	TOP OF 1" PVC ELECTRIC	10056.77'	10349.44'	3692.60'
307	TOP OF 1" PVC ELECTRIC	10053.59'	10354.63'	3692.22'
308	TOP OF 4" RMP	10053.06'	10354.81'	3690.37'
309	TOP OF 4" RMP	10053.40'	10346.21'	3690.73'



0.37'

0.38'

1.14'



3.04'



THIS DOCUMENT WAS CREATED FOR SURVEYING PURPOSES ONLY

SCALE  
LINE IS 2 INCHES AT FULL SCALE  
(IF NOT 2" = SCALE ACCORDINGLY)  
HOR: 1"=5' VER:  
W.O. 092322-8  
DATE: OCTOBER 10, 2022  
DESIGN BY:  
DRAWN BY: LR  
CHKD. BY: STM  
APPD. BY: STM

DATE	REVISIONS	BY



HASKELL R. STREET W.W.T.P.  
PARTIAL SURVEY

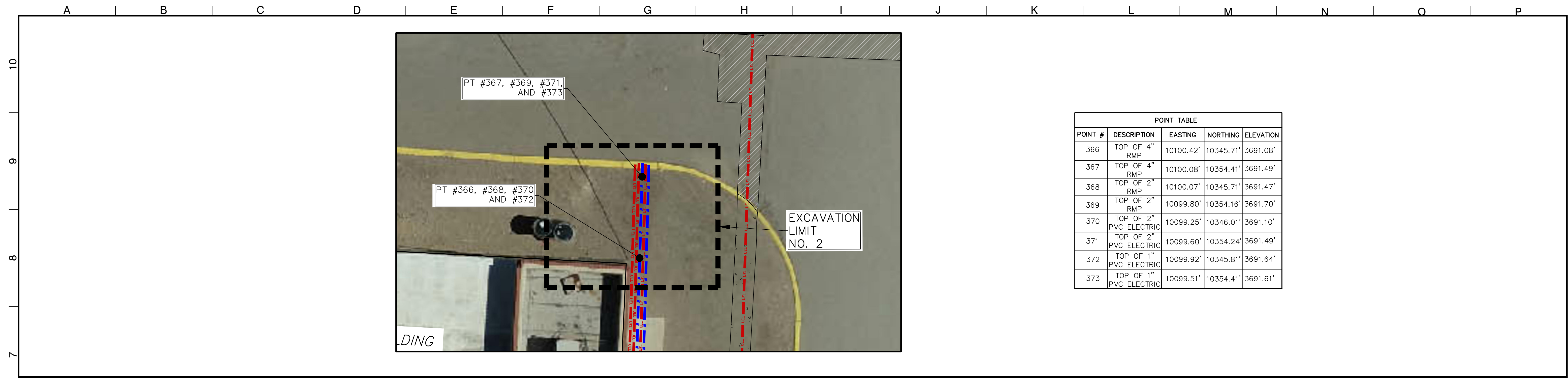
S.U.E. FOR SCADA BUILDING

PD 2

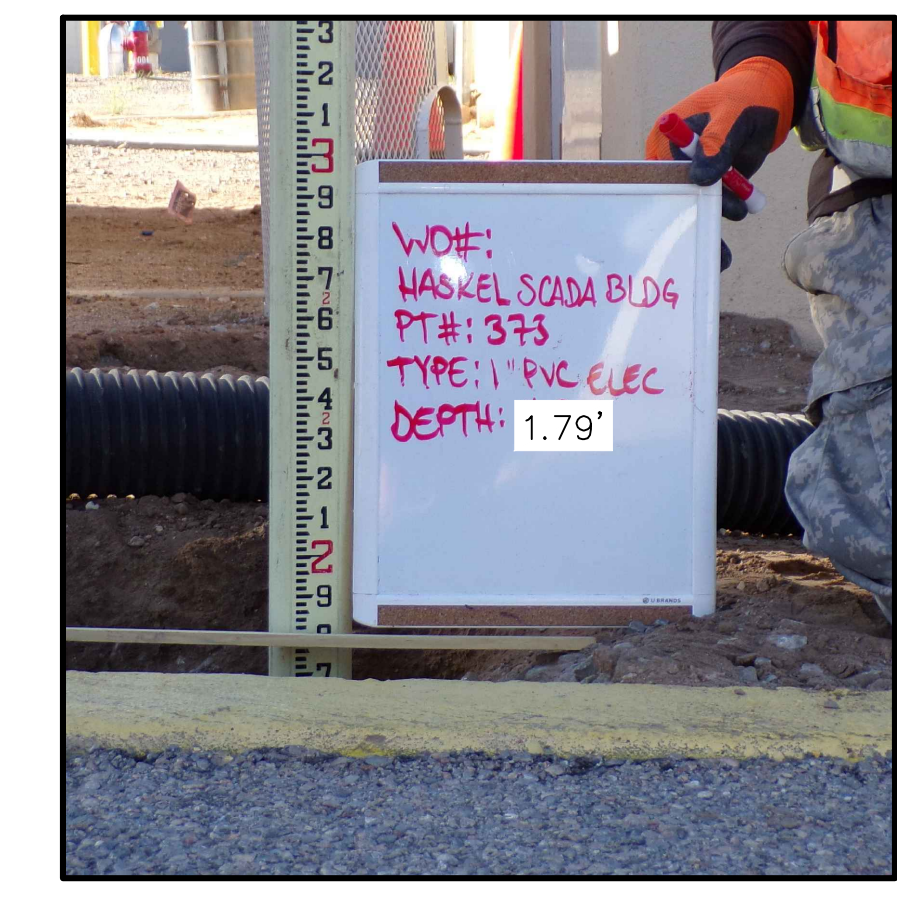
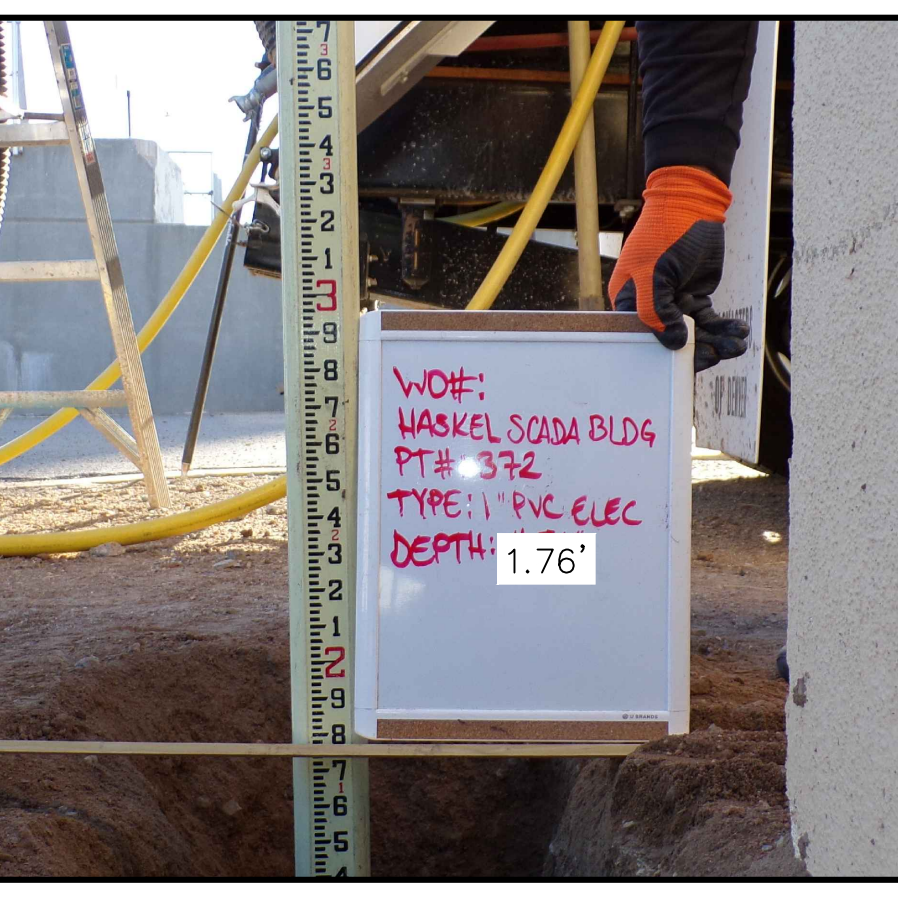
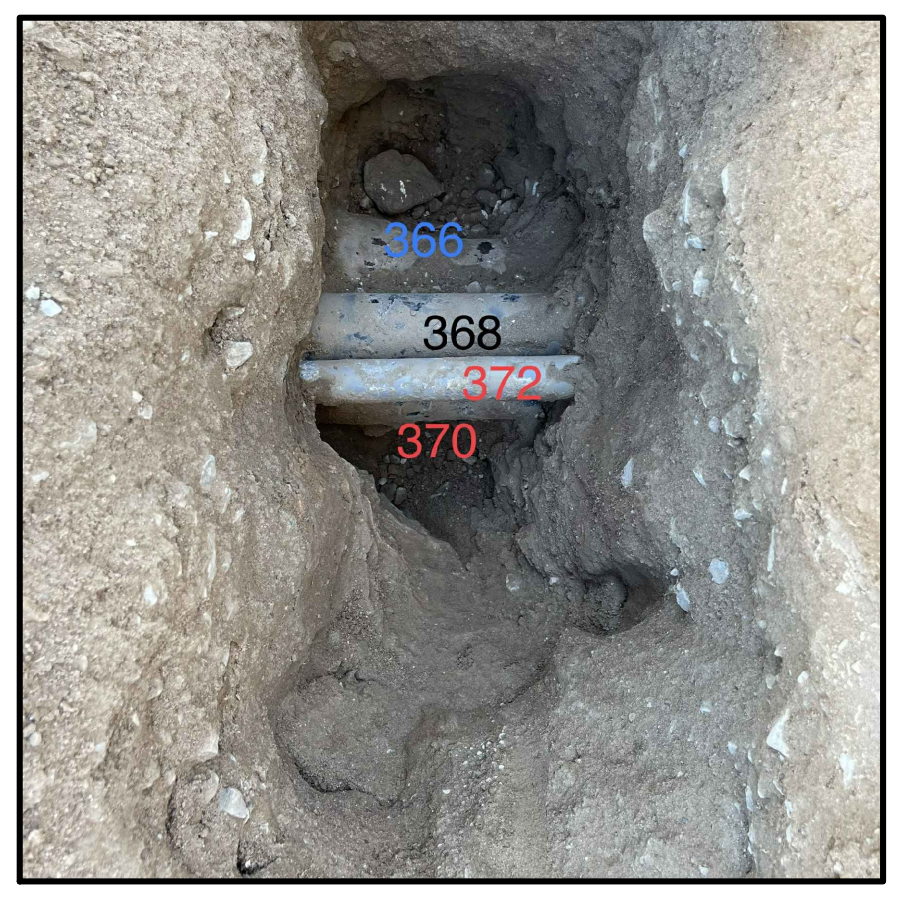
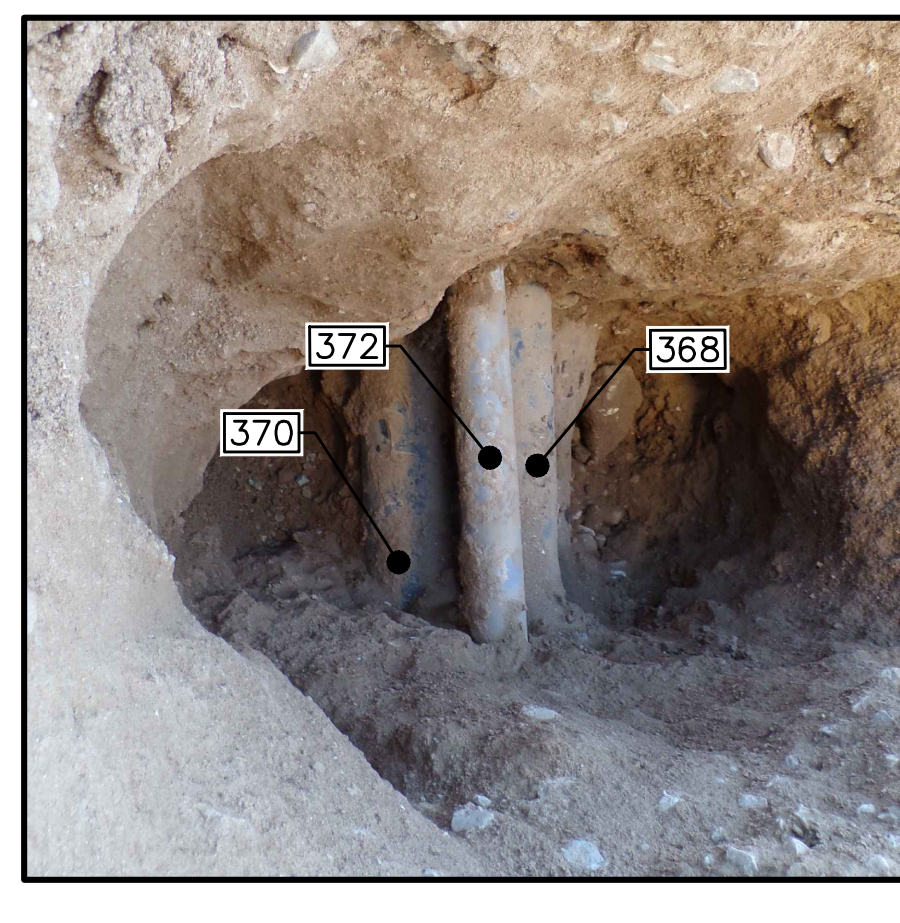
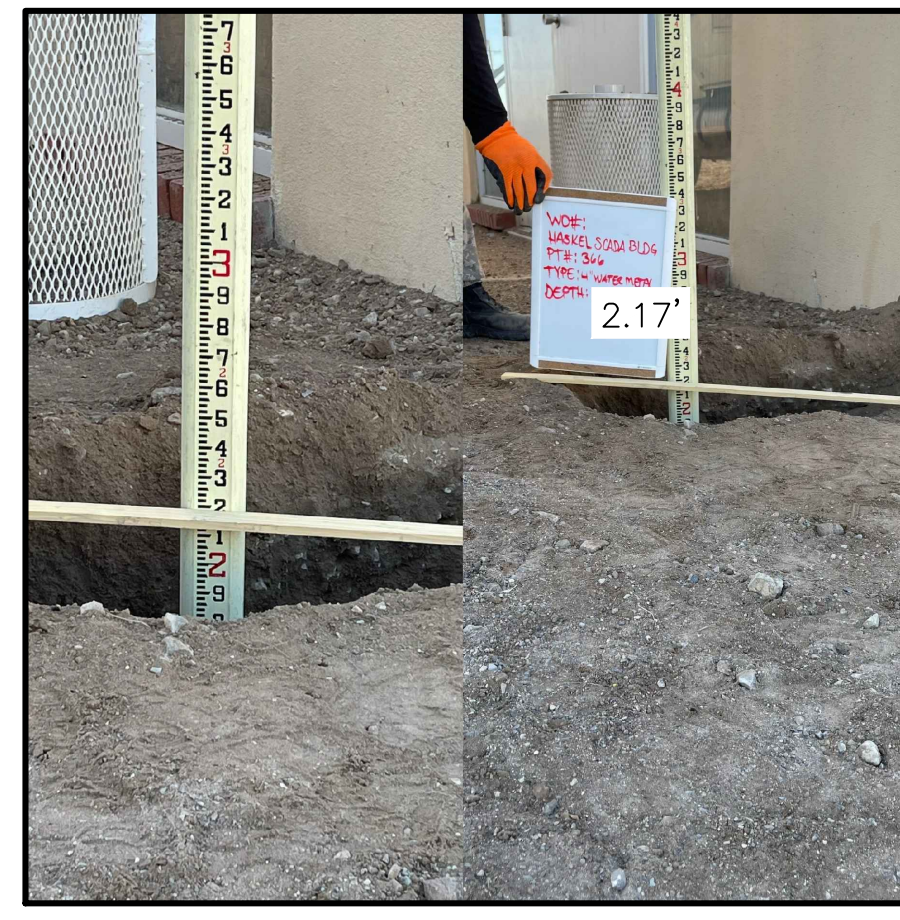
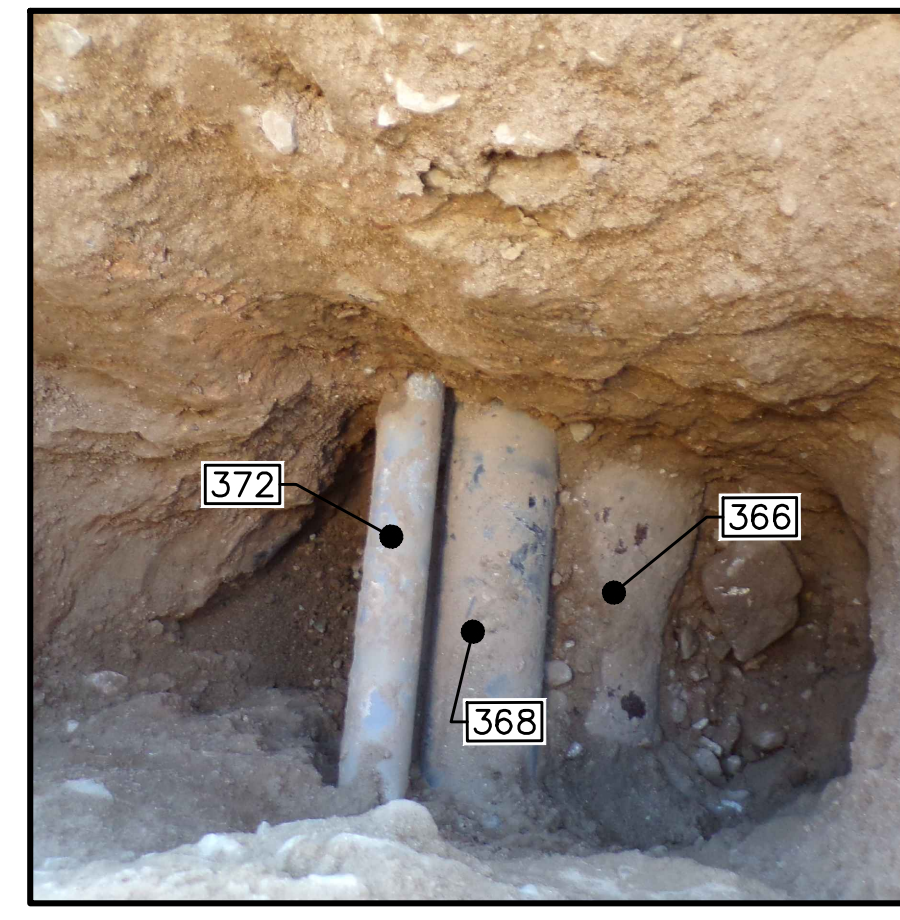
SHEET NO. 2



\\SERVER\Clients\EI Paso Water\092322-8 SUE SCADA Bldg\Survey Folder\092322-8 HASKEL SCADA BLDG PLANT DATUM LR 2.DWG 10/13/22 10:37AM



POINT TABLE				
POINT #	DESCRIPTION	EASTING	NORTHING	ELEVATION
366	TOP OF 4" RMP	10100.42'	10345.71'	3691.08'
367	TOP OF 4" RMP	10100.08'	10354.41'	3691.49'
368	TOP OF 2" RMP	10100.07'	10345.71'	3691.47'
369	TOP OF 2" RMP	10099.80'	10354.16'	3691.70'
370	TOP OF 2" PVC ELECTRIC	10099.25'	10346.01'	3691.10'
371	TOP OF 2" PVC ELECTRIC	10099.60'	10354.24'	3691.49'
372	TOP OF 1" PVC ELECTRIC	10099.92'	10345.81'	3691.64'
373	TOP OF 1" PVC ELECTRIC	10099.51'	10354.41'	3691.61'



**H<sub>2</sub>Terra**  
 ENGINEERING. SURVEYING. SOLUTIONS.  
 TBPE FIRM NO. F-2103 TBPLS FIRM NO. 10060700  
 2020 E. MILLS AVENUE EI Paso, TX 79901  
 (915) 533-1418 FAX: (915) 533-4972

THIS DOCUMENT WAS CREATED FOR SURVEYING PURPOSES ONLY

SCALE  
 LINE IS 2 INCHES AT FULL SCALE  
 (IF NOT 2" = SCALE ACCORDINGLY)  
 HOR: 1"=5' VER:  
 W.O. 092322-8  
 DATE: OCTOBER 10, 2022  
 DESIGN BY:  
 DRAWN BY: LR  
 CHKD. BY: STM  
 APPD. BY: STM

DATE	REVISIONS	BY



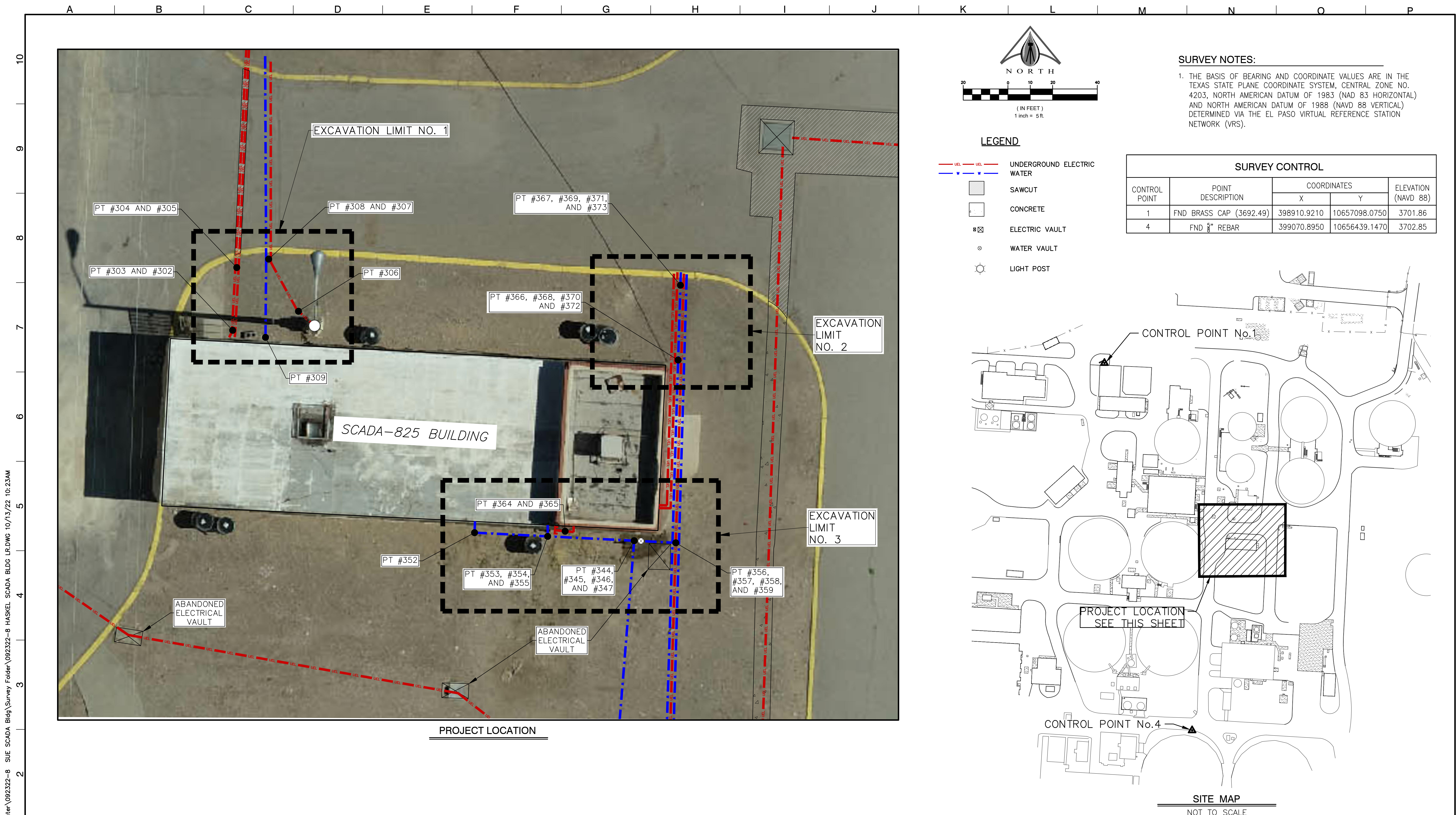
**HASKELL R. STREET W.W.T.P.  
 PARTIAL SURVEY**  
 S.U.E. FOR SCADA BUILDING

**PD 3**  
 SHEET NO. 3







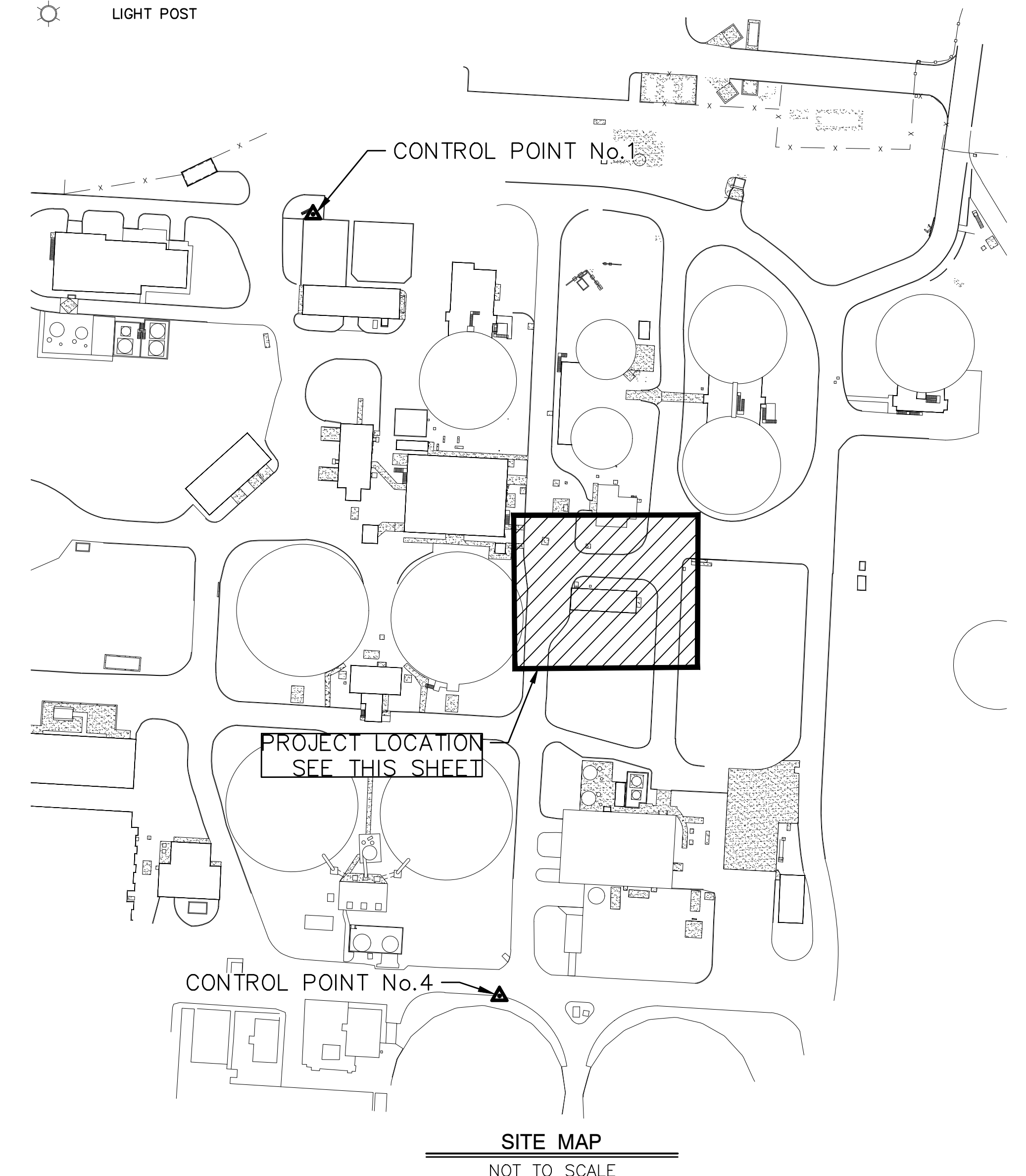


**SURVEY NOTES:**

- THE BASIS OF BEARING AND COORDINATE VALUES ARE IN THE TEXAS STATE PLANE COORDINATE SYSTEM, CENTRAL ZONE NO. 4203, NORTH AMERICAN DATUM OF 1983 (NAD 83 HORIZONTAL) AND NORTH AMERICAN DATUM OF 1988 (NAVD 88 VERTICAL) DETERMINED VIA THE EL PASO VIRTUAL REFERENCE STATION NETWORK (VRS).

SURVEY CONTROL				
CONTROL POINT	POINT DESCRIPTION	COORDINATES		ELEVATION (NAVD 88)
		X	Y	
1	FND BRASS CAP (3692.49)	398910.9210	10657098.0750	3701.86
4	FND 3" REBAR	399070.8950	10656439.1470	3702.85

- LEGEND**
- UNDERGROUND ELECTRIC
  - WATER
  - SAWCUT
  - CONCRETE
  - ELECTRIC VAULT
  - WATER VAULT
  - LIGHT POST



\\SERVER\Clients\EI Paso Water\092322-8 SUE SCADA Bldg\Survey Folder\092322-8 HASKEL SCADA BLDG LR.DWG 10/13/22 10:23AM

**H<sub>2</sub>Terra**  
 ENGINEERING. SURVEYING. SOLUTIONS.  
 TBPE FIRM NO. F-2103 TBPLS FIRM NO. 10060700  
 2020 E. MILLS AVENUE EI Paso, TX 79901  
 (915) 533-1418 FAX: (915) 533-4972

THIS DOCUMENT WAS CREATED FOR SURVEYING PURPOSES ONLY

**SCALE**  
 LINE IS 2 INCHES AT FULL SCALE  
 (IF NOT 2" - SCALE ACCORDINGLY)  
 HOR: 1"=50' VER:  
 W.O. 092322-8  
 DATE: OCTOBER 10, 2022  
 DESIGN BY: LR  
 DRAWN BY: STM  
 CHKD. BY: STM  
 APPD. BY: STM

DATE	REVISIONS	BY



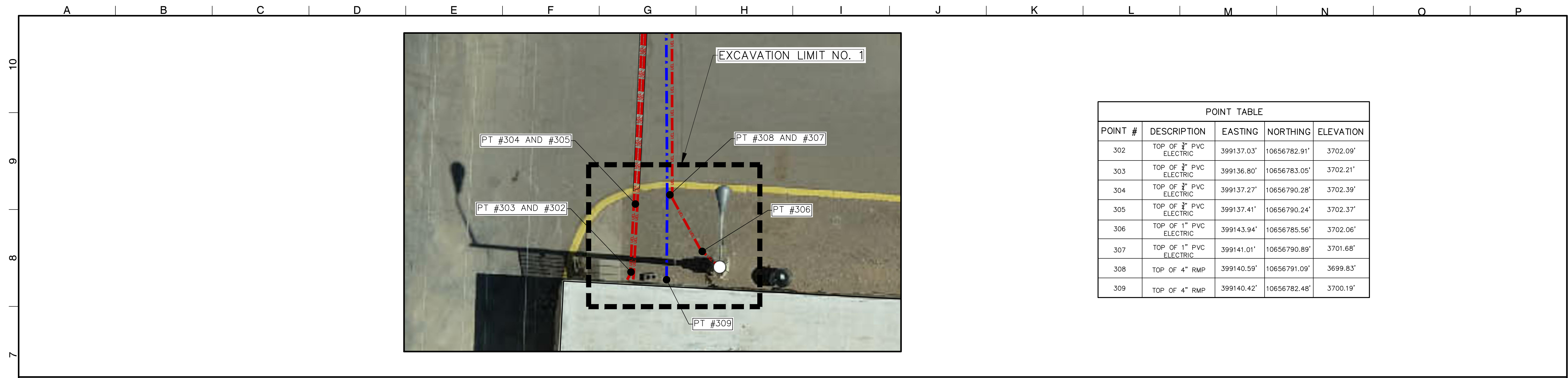
**HASKELL R. STREET W.W.T.P.  
 PARTIAL SURVEY**

S.U.E. FOR SCADA BUILDING

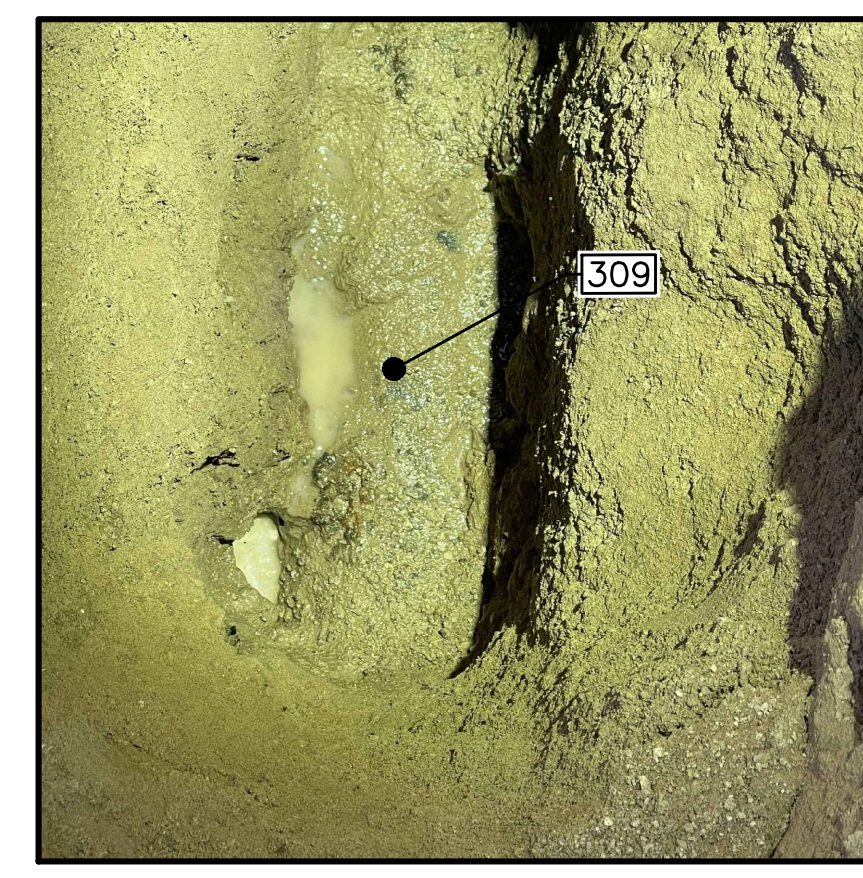
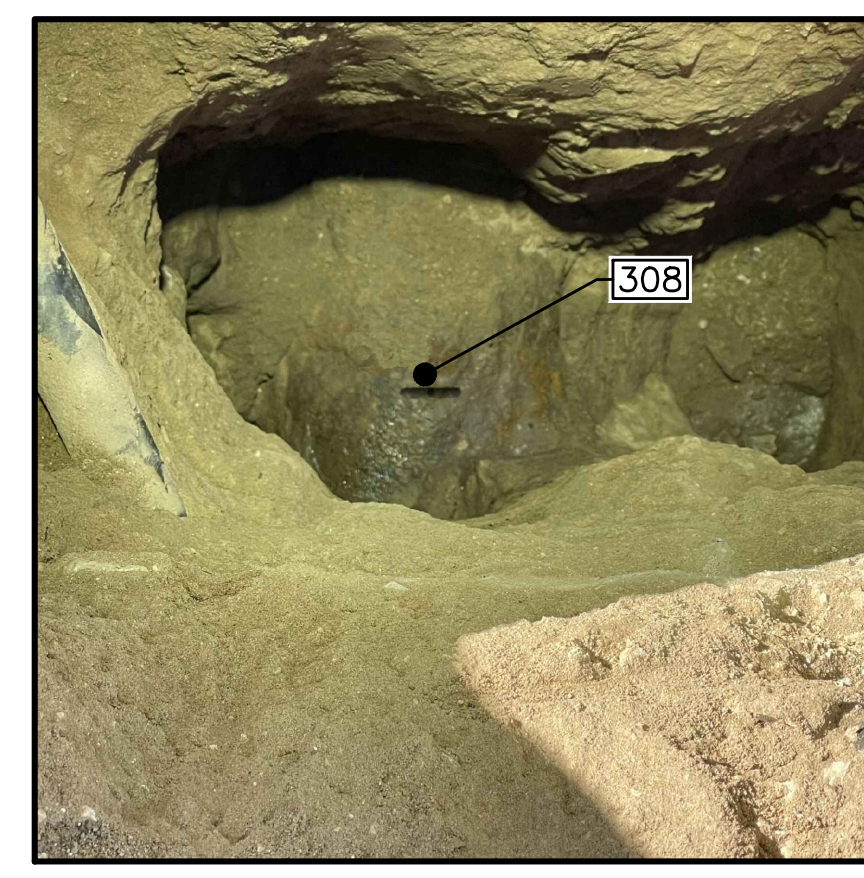
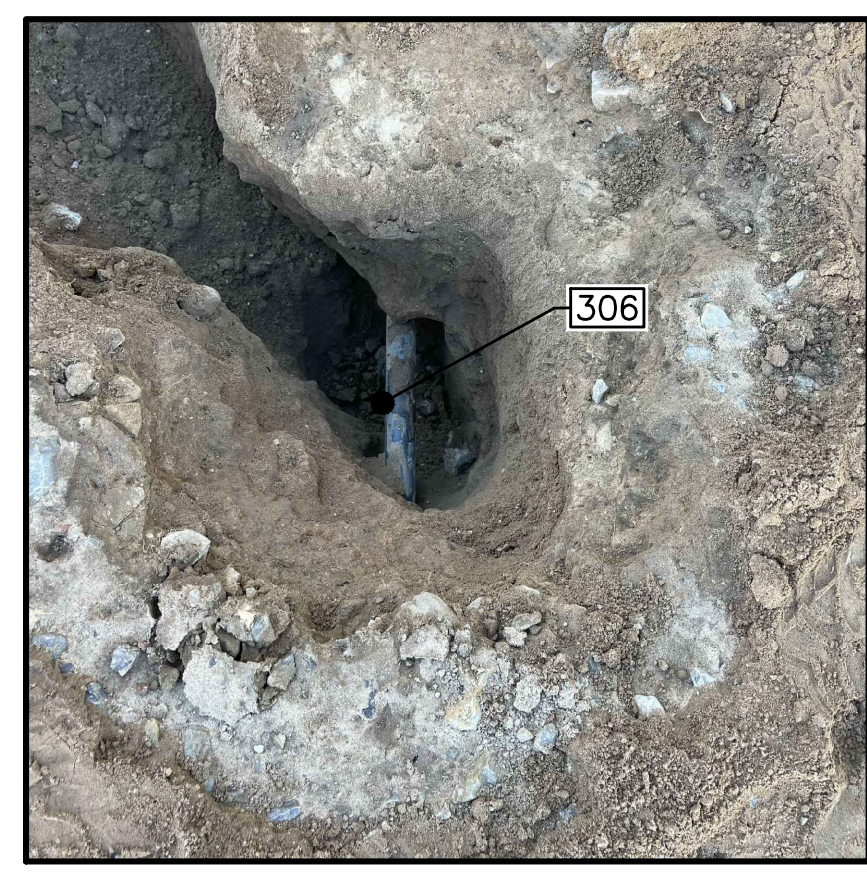
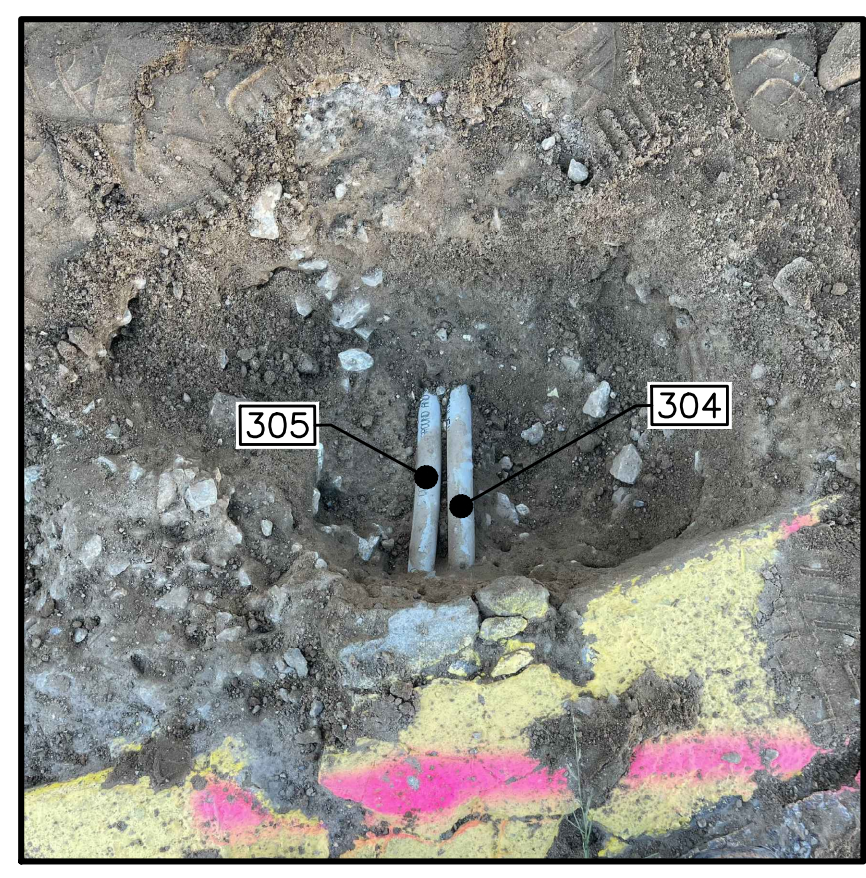
**SP 1**  
 SHEET NO. 1



\\SERVER\Clients\EI Paso Water\092322-8 SUE SCADA Bldg\Survey Folder\092322-8 HASKEL SCADA BLDG LR.DWG 10/13/22 10:23AM



POINT TABLE				
POINT #	DESCRIPTION	EASTING	NORTHING	ELEVATION
302	TOP OF 3/4" PVC ELECTRIC	399137.03'	10656782.91'	3702.09'
303	TOP OF 3/4" PVC ELECTRIC	399136.80'	10656783.05'	3702.21'
304	TOP OF 3/4" PVC ELECTRIC	399137.27'	10656790.28'	3702.39'
305	TOP OF 3/4" PVC ELECTRIC	399137.41'	10656790.24'	3702.37'
306	TOP OF 1" PVC ELECTRIC	399143.94'	10656785.56'	3702.06'
307	TOP OF 1" PVC ELECTRIC	399141.01'	10656790.89'	3701.68'
308	TOP OF 4" RMP	399140.59'	10656791.09'	3699.83'
309	TOP OF 4" RMP	399140.42'	10656782.48'	3700.19'



ENGINEERING. SURVEYING. SOLUTIONS.  
 TBPE FIRM NO. F-2103 TBPLS FIRM NO. 10060700  
 2020 E. MILLS AVENUE EI Paso, TX 79901  
 (915) 533-1418 FAX: (915) 533-4972

THIS DOCUMENT WAS CREATED FOR SURVEYING PURPOSES ONLY

SCALE  
 LINE IS 2 INCHES AT FULL SCALE  
 (IF NOT 2" = SCALE ACCORDINGLY)  
 HOR: 1"=5' VER:  
 W.O. 092322-8  
 DATE: OCTOBER 10, 2022  
 DESIGN BY:  
 DRAWN BY: LR  
 CHKD. BY: STM  
 APPD. BY: STM

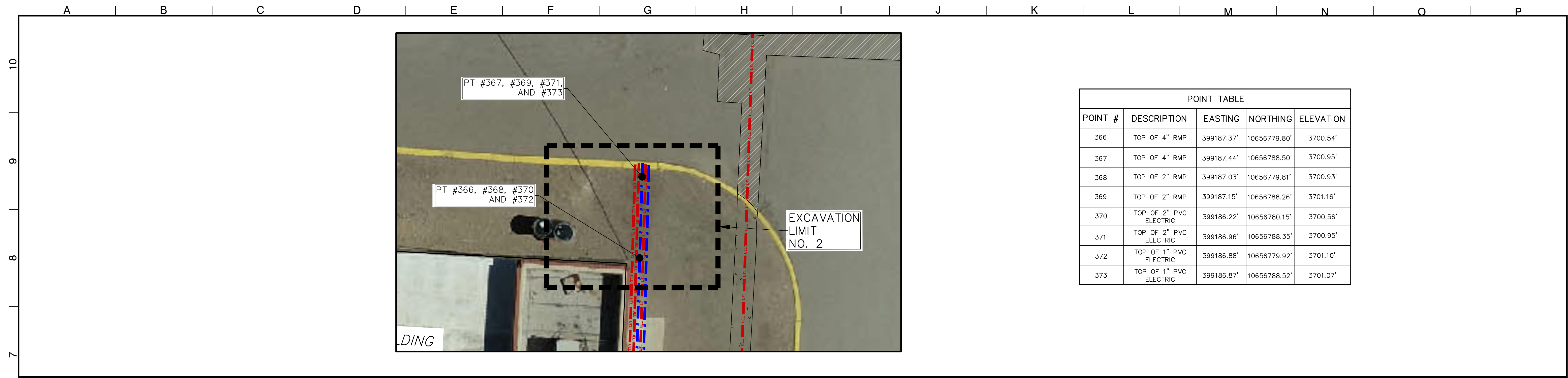
DATE	REVISIONS	BY

**HASKELL R. STREET W.W.T.P.  
 PARTIAL SURVEY**  
  
 S.U.E. FOR SCADA BUILDING

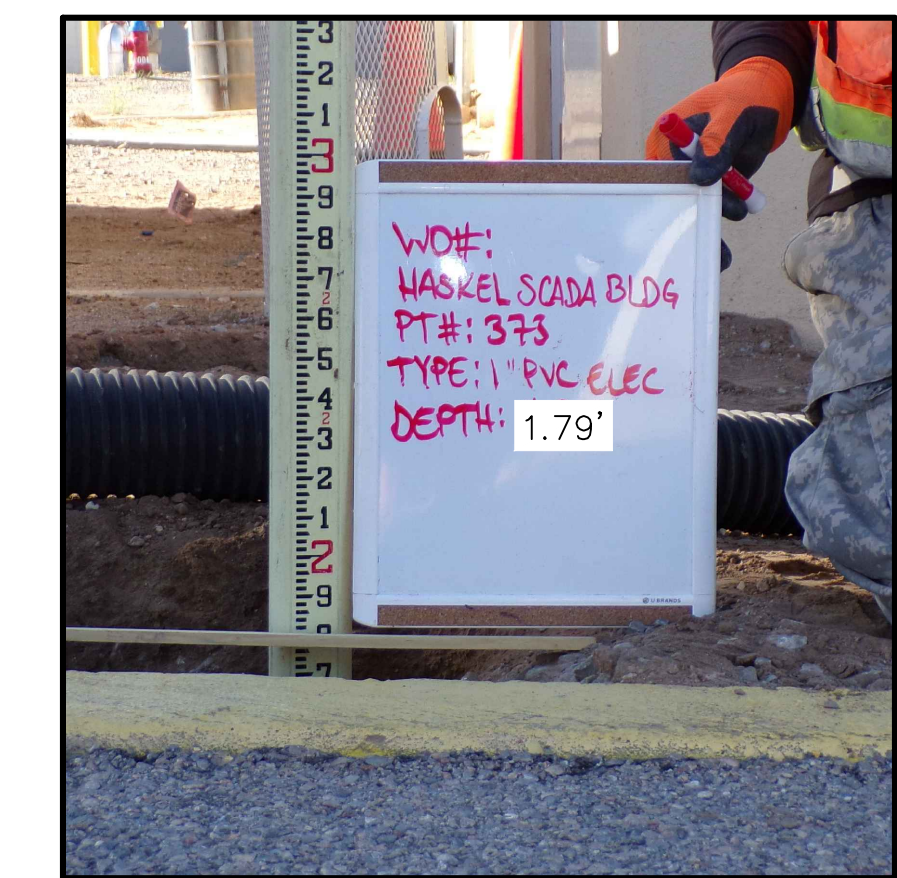
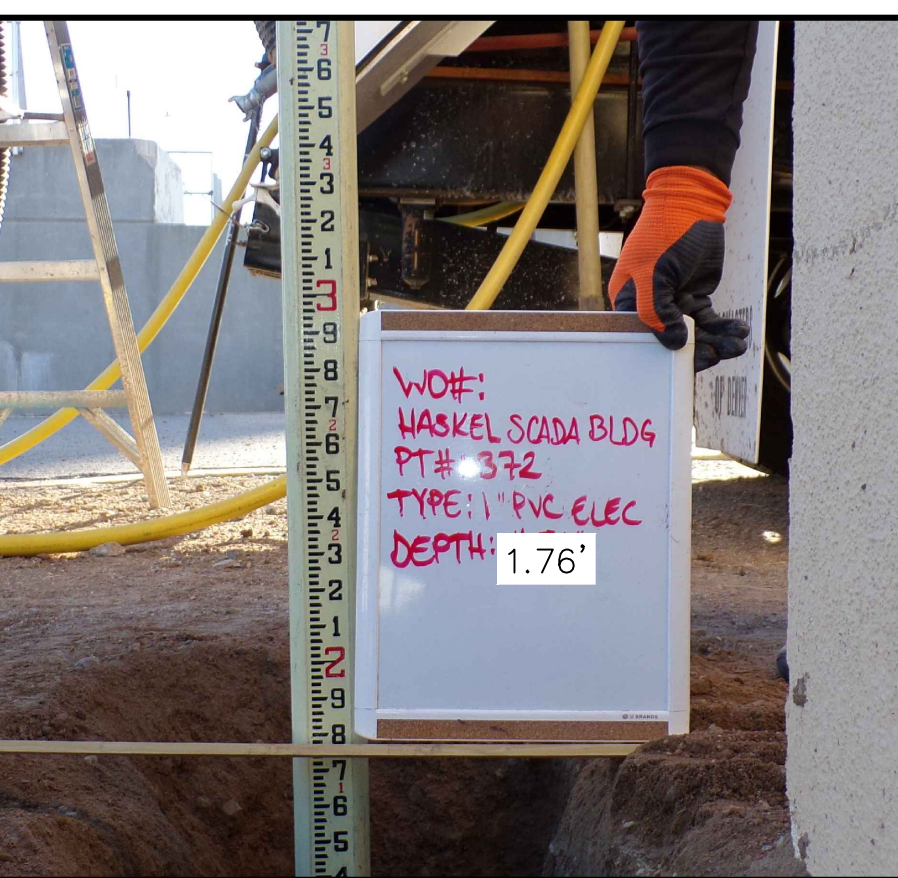
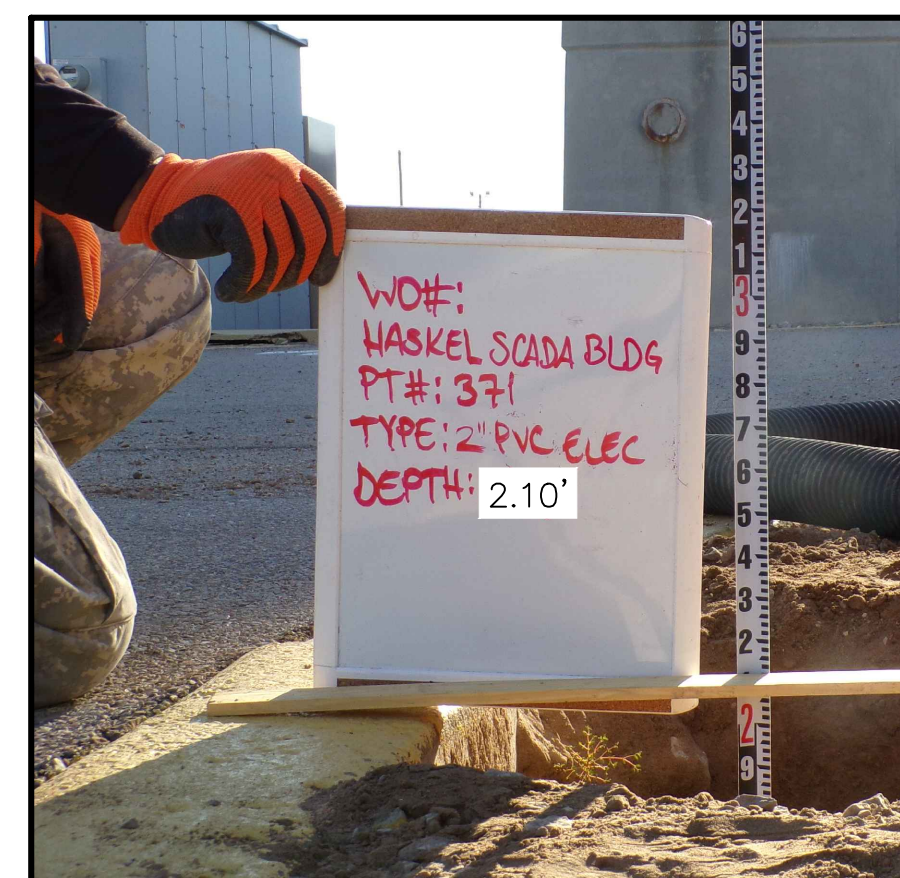
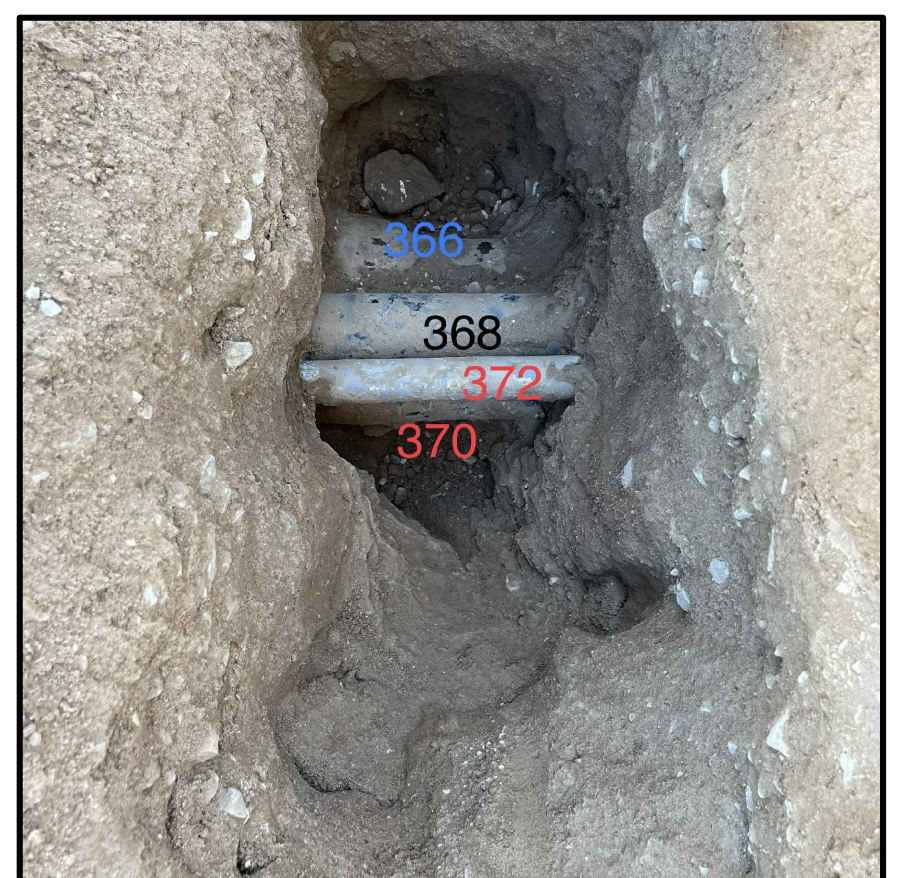
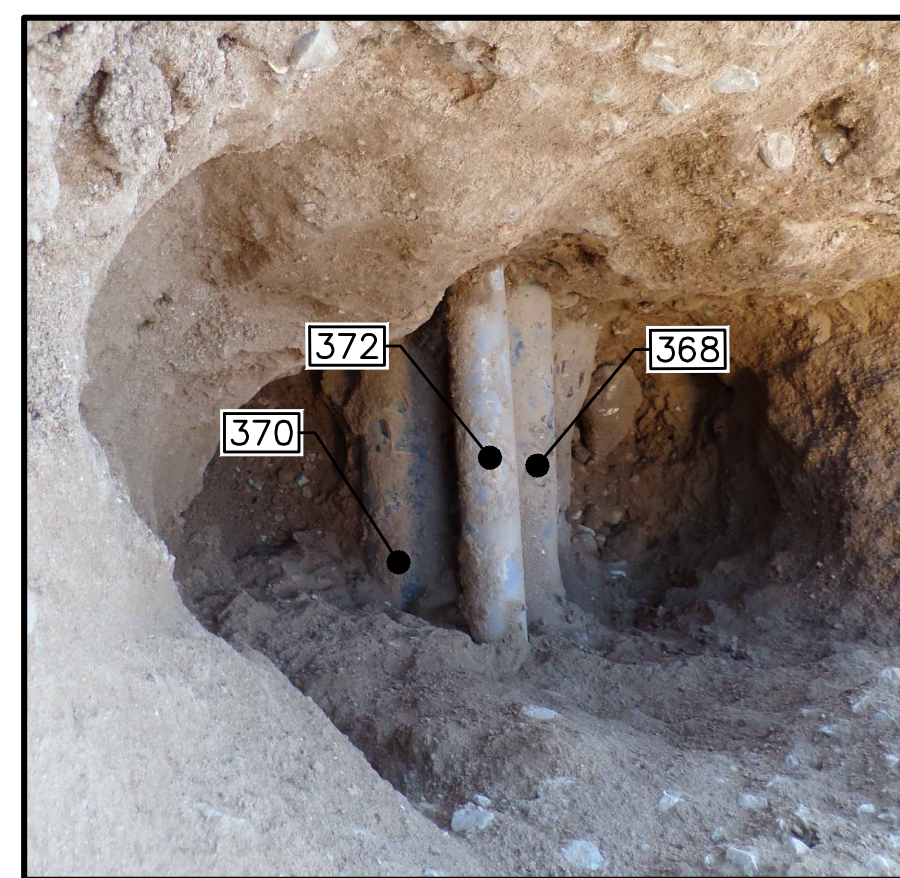
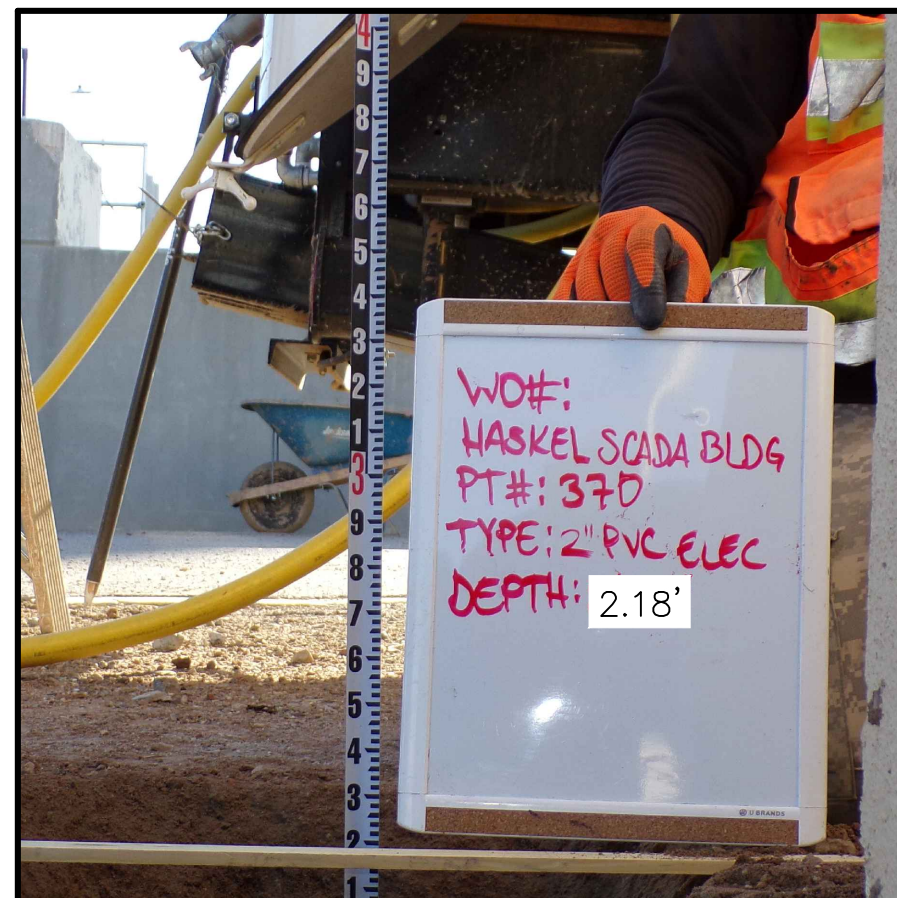
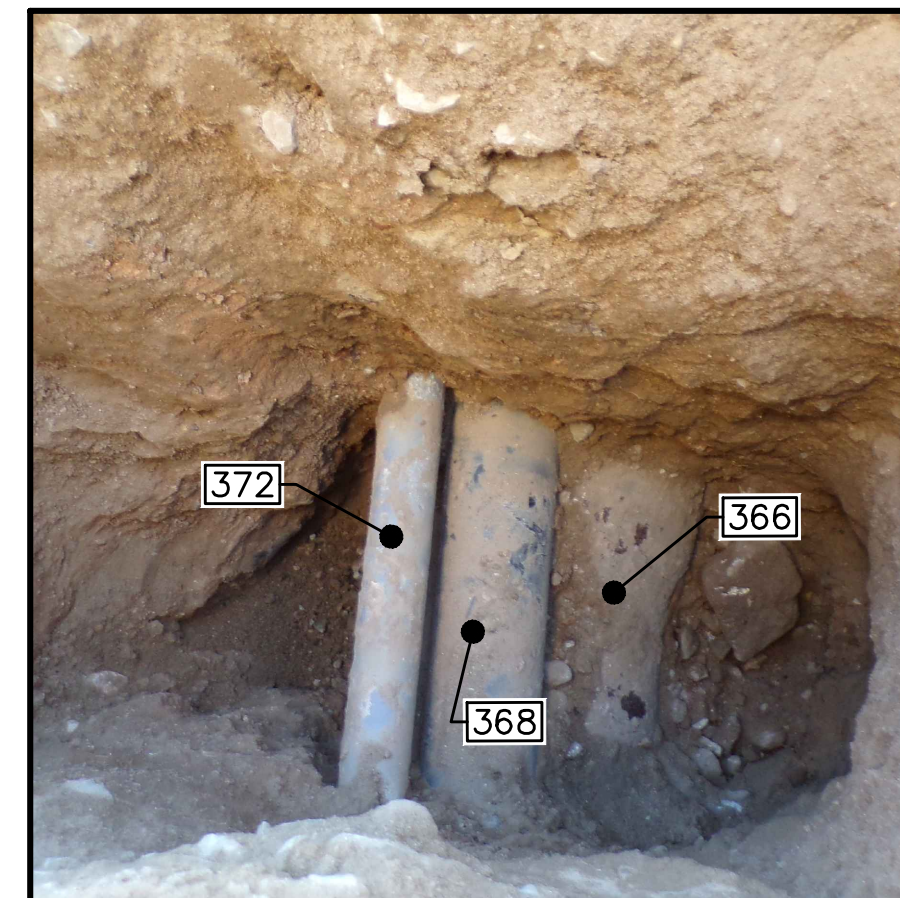
**SP 2**  
 SHEET NO. 2



\\SERVER\Clients\EI Paso Water\092322-8 SUE SCADA Bldg\Survey Folder\092322-8 HASKEL SCADA BLDG LR.DWG 10/13/22 10:24AM



POINT TABLE				
POINT #	DESCRIPTION	EASTING	NORTHING	ELEVATION
366	TOP OF 4" RMP	399187.37'	10656779.80'	3700.54'
367	TOP OF 4" RMP	399187.44'	10656788.50'	3700.95'
368	TOP OF 2" RMP	399187.03'	10656779.81'	3700.93'
369	TOP OF 2" RMP	399187.15'	10656788.26'	3701.16'
370	TOP OF 2" PVC ELECTRIC	399186.22'	10656780.15'	3700.56'
371	TOP OF 2" PVC ELECTRIC	399186.96'	10656788.35'	3700.95'
372	TOP OF 1" PVC ELECTRIC	399186.88'	10656779.92'	3701.10'
373	TOP OF 1" PVC ELECTRIC	399186.87'	10656788.52'	3701.07'



**H<sub>2</sub>Terra**  
 ENGINEERING. SURVEYING. SOLUTIONS.  
 TBPE FIRM NO. F-2103 TBPLS FIRM NO. 10060700  
 2020 E. MILLS AVENUE EI Paso, TX 79901  
 (915) 533-1418 FAX: (915) 533-4972

THIS DOCUMENT WAS CREATED FOR SURVEYING PURPOSES ONLY

SCALE  
 LINE IS 2 INCHES AT FULL SCALE  
 (IF NOT 2" = SCALE ACCORDINGLY)  
 HOR: 1"=5' VER:  
 W.O. 092322-8  
 DATE: OCTOBER 10, 2022  
 DESIGN BY:  
 DRAWN BY: LR  
 CHKD. BY: STM  
 APPD. BY: STM

DATE	REVISIONS	BY

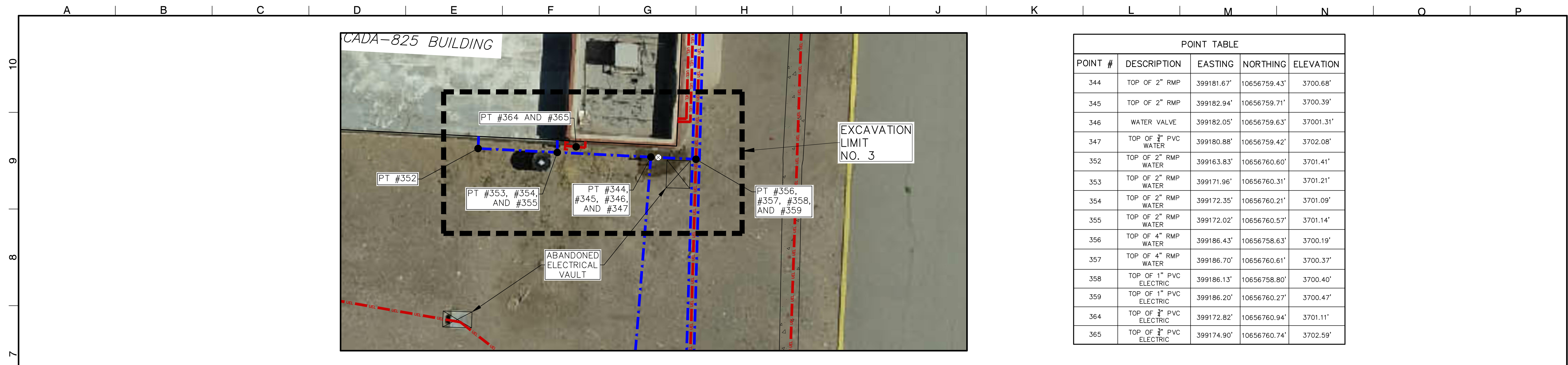


**HASKELL R. STREET W.W.T.P.  
 PARTIAL SURVEY**  
 S.U.E. FOR SCADA BUILDING

**SP 3**  
 SHEET NO. 3



\\SERVER\Clients\EI Paso Water\092322-8 SUE SCADA Bldg\Survey Folder\092322-8 HASKEL SCADA BLDG LR.DWG 10/13/22 10:24AM



POINT TABLE				
POINT #	DESCRIPTION	EASTING	NORTHING	ELEVATION
344	TOP OF 2" RMP	399181.67'	10656759.43'	3700.68'
345	TOP OF 2" RMP	399182.94'	10656759.71'	3700.39'
346	WATER VALVE	399182.05'	10656759.63'	3700.31'
347	TOP OF 3" PVC WATER	399180.88'	10656759.42'	3702.08'
352	TOP OF 2" RMP WATER	399163.83'	10656760.60'	3701.41'
353	TOP OF 2" RMP WATER	399171.96'	10656760.31'	3701.21'
354	TOP OF 2" RMP WATER	399172.35'	10656760.21'	3701.09'
355	TOP OF 2" RMP WATER	399172.02'	10656760.57'	3701.14'
356	TOP OF 4" RMP WATER	399186.43'	10656758.63'	3700.19'
357	TOP OF 4" RMP WATER	399186.70'	10656760.61'	3700.37'
358	TOP OF 1" PVC ELECTRIC	399186.13'	10656758.80'	3700.40'
359	TOP OF 1" PVC ELECTRIC	399186.20'	10656760.27'	3700.47'
364	TOP OF 3" PVC ELECTRIC	399172.82'	10656760.94'	3701.11'
365	TOP OF 3" PVC ELECTRIC	399174.90'	10656760.74'	3702.59'



<p><b>H<sub>2</sub>Terra</b> ENGINEERING. SURVEYING. SOLUTIONS. TBPE FIRM NO. F-2103 TBPLS FIRM NO. 10060700 2020 E. MILLS AVENUE El Paso, TX 79901 (915) 533-1418 FAX: (915) 533-4972</p>	<p>THIS DOCUMENT WAS CREATED FOR SURVEYING PURPOSES ONLY</p>	<p><b>SCALE</b> LINE IS 2 INCHES AT FULL SCALE (IF NOT 2" = SCALE ACCORDINGLY) HOR: 1"=5' VER: W.O. 092322-8 DATE: OCTOBER 10, 2022 DESIGN BY: DRAWN BY: LR CHKD. BY: STM APPD. BY: STM</p>	<p><b>DATE</b></p>	<p><b>REVISIONS</b></p>	<p><b>BY</b></p>		<p><b>HASKELL R. STREET W.W.T.P. PARTIAL SURVEY</b></p>	<p><b>SP 4</b></p>
							<p>S.U.E. FOR SCADA BUILDING</p>	